

987 HAZEL DRIVE

Lavon, TX 75166

RootTheme

CALL TODAY

469-833-2464

Under Construction



\$329,990

LOCATION

1126 Yucca Avenue, Lavon TX

Trails of Lavon

PLAN

Magnolia

ELEVATION:

Elevation A

A floor plan that epitomizes grace and functionality, offering a harmonious blend of classic charm and contemporary comfort - the Magnolia. Designed with meticulous attention to detail, this layout creates an inviting space ideal for both relaxed living and elegant entertaining. In essence, the Magnolia floor plan offers a perfect blend of elegance and everyday convenience, delivering a living experience that is both refined and accommodating. Discover the Magnolia, where timeless beauty meets modern living.

[greenbrickHomes.com](https://www.greenbrickHomes.com)

Pricing, features and availability are subject to change without notice. Root Theme makes reasonable efforts to provide accurate information, however, no warranties or representations are made as to its accuracy and Root Theme assumes no liability or responsibility for any errors in pricing or content. All pricing information, including promotions and incentives, must be verified by an authorized representative for the appropriate community and home. Photography, floor plans, elevations, renderings, virtual tours, maps, square footage and dimensions are approximate and for illustration purposes only, and will vary from the homes as built and are subject to change without notice. Homes in each neighborhood may be owned and sold by a separate limited liability company (LLC) or other corporate entity.

987 HAZEL DRIVE

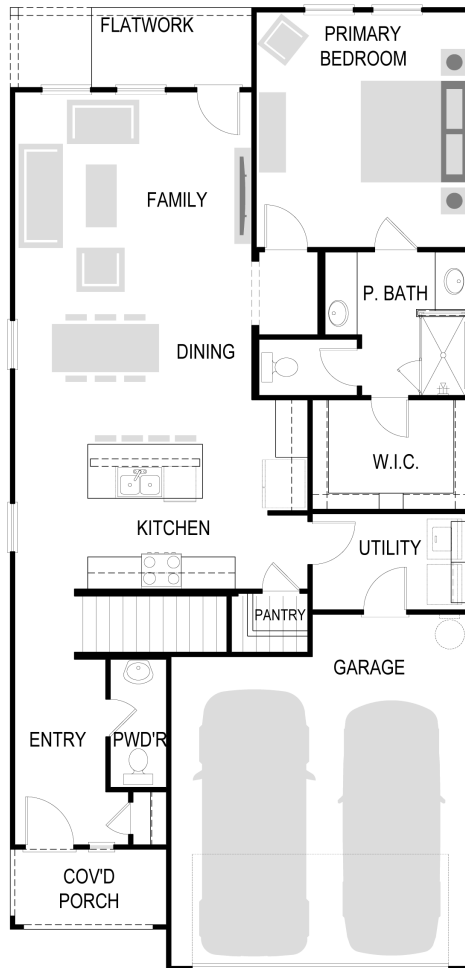
Lavon, TX 75166

RootTheme

CALL TODAY

469-833-2464

First Floor



greenbrickHomes.com

Pricing, features and availability are subject to change without notice. Root Theme makes reasonable efforts to provide accurate information, however, no warranties or representations are made as to its accuracy and Root Theme assumes no liability or responsibility for any errors in pricing or content. All pricing information, including promotions and incentives, must be verified by an authorized representative for the appropriate community and home. Photography, floor plans, elevations, renderings, virtual tours, maps, square footage and dimensions are approximate and for illustration purposes only, and will vary from the homes as built and are subject to change without notice. Homes in each neighborhood may be owned and sold by a separate limited liability company (LLC) or other corporate entity.

987 HAZEL DRIVE

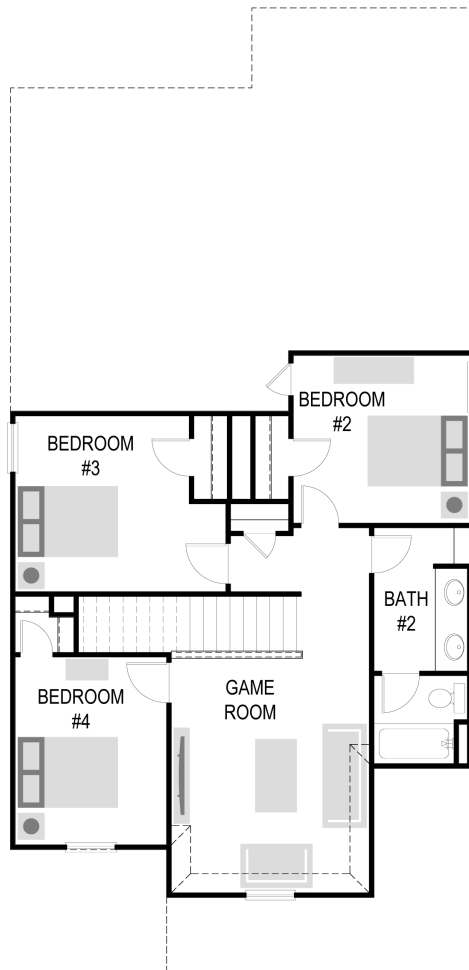
Lavon, TX 75166

RootTheme

CALL TODAY

469-833-2464

Second Floor



greenbrickHomes.com

Pricing, features and availability are subject to change without notice. Root Theme makes reasonable efforts to provide accurate information, however, no warranties or representations are made as to its accuracy and Root Theme assumes no liability or responsibility for any errors in pricing or content. All pricing information, including promotions and incentives, must be verified by an authorized representative for the appropriate community and home. Photography, floor plans, elevations, renderings, virtual tours, maps, square footage and dimensions are approximate and for illustration purposes only, and will vary from the homes as built and are subject to change without notice. Homes in each neighborhood may be owned and sold by a separate limited liability company (LLC) or other corporate entity.

987 HAZEL DRIVE

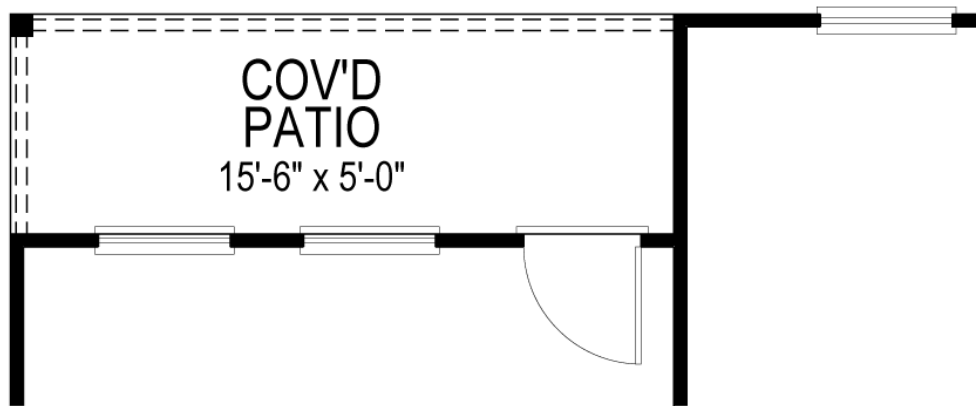
Lavon, TX 75166

RootTheme

CALL TODAY

469-833-2464

Option



COVERED PATIO

[greenbrickHomes.com](https://www.greenbrickHomes.com)

Pricing, features and availability are subject to change without notice. Root Theme makes reasonable efforts to provide accurate information, however, no warranties or representations are made as to its accuracy and Root Theme assumes no liability or responsibility for any errors in pricing or content. All pricing information, including promotions and incentives, must be verified by an authorized representative for the appropriate community and home. Photography, floor plans, elevations, renderings, virtual tours, maps, square footage and dimensions are approximate and for illustration purposes only, and will vary from the homes as built and are subject to change without notice. Homes in each neighborhood may be owned and sold by a separate limited liability company (LLC) or other corporate entity.