

# 313 SEPULVEDA STREET

Hutto, TX 78634

RootTheme

CALL TODAY

737-380-1284

Move-in Ready



## \$384,800

### LOCATION

602 Universal Drive, Hutto TX

Prairie Winds

### PLAN

Colorado

The Colorado floor plan, with its three comfortable bedrooms and two well-appointed baths, is designed for practical living with an inviting feel. This home offers a seamless flow, creating an open and connected living space that's perfect for both daily routines and gathering with loved ones. The intelligent layout maximizes every square foot, providing both functionality and a welcoming atmosphere.

[greenbrickHomes.com](https://www.greenbrickHomes.com)

Pricing, features and availability are subject to change without notice. Root Theme makes reasonable efforts to provide accurate information, however, no warranties or representations are made as to its accuracy and Root Theme assumes no liability or responsibility for any errors in pricing or content. All pricing information, including promotions and incentives, must be verified by an authorized representative for the appropriate community and home. Photography, floor plans, elevations, renderings, virtual tours, maps, square footage and dimensions are approximate and for illustration purposes only, and will vary from the homes as built and are subject to change without notice. Homes in each neighborhood may be owned and sold by a separate limited liability company (LLC) or other corporate entity.



# 313 SEPULVEDA STREET

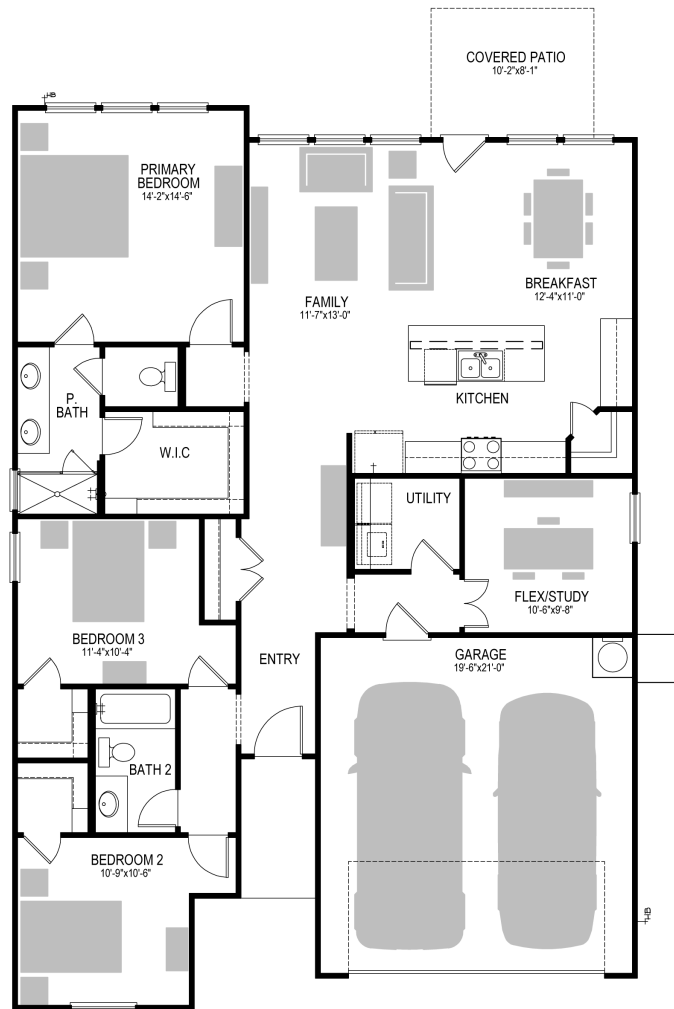
Hutto, TX 78634

RootTheme

CALL TODAY

737-380-1284

## First Floor



[greenbrickHomes.com](http://greenbrickHomes.com)

Pricing, features and availability are subject to change without notice. Root Theme makes reasonable efforts to provide accurate information, however, no warranties or representations are made as to its accuracy and Root Theme assumes no liability or responsibility for any errors in pricing or content. All pricing information, including promotions and incentives, must be verified by an authorized representative for the appropriate community and home. Photography, floor plans, elevations, renderings, virtual tours, maps, square footage and dimensions are approximate and for illustration purposes only, and will vary from the homes as built and are subject to change without notice. Homes in each neighborhood may be owned and sold by a separate limited liability company (LLC) or other corporate entity.

# 313 SEPULVEDA STREET

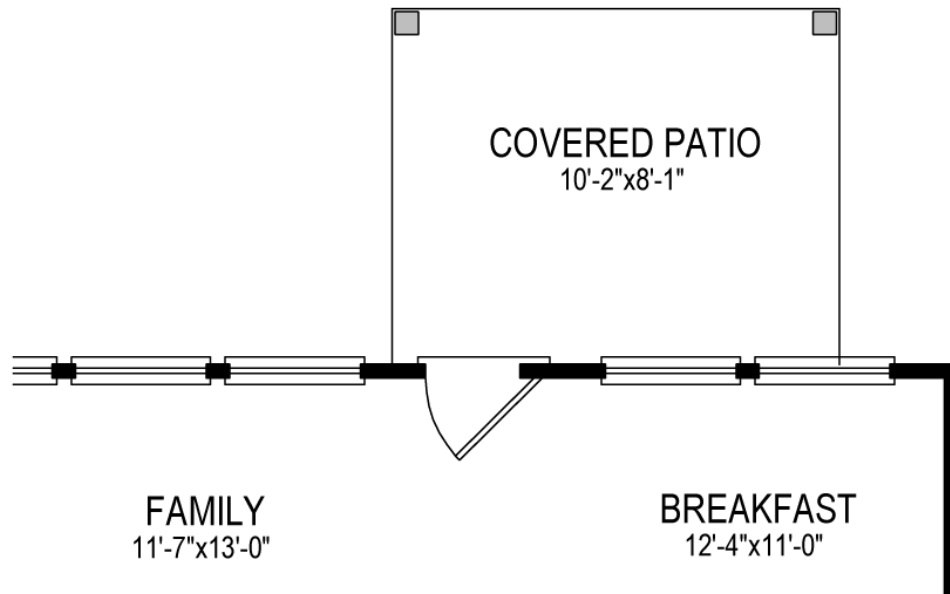
Hutto, TX 78634

RootTheme

CALL TODAY

737-380-1284

## Option



## COVERED PATIO

[greenbrickHomes.com](http://greenbrickHomes.com)

Pricing, features and availability are subject to change without notice. Root Theme makes reasonable efforts to provide accurate information, however, no warranties or representations are made as to its accuracy and Root Theme assumes no liability or responsibility for any errors in pricing or content. All pricing information, including promotions and incentives, must be verified by an authorized representative for the appropriate community and home. Photography, floor plans, elevations, renderings, virtual tours, maps, square footage and dimensions are approximate and for illustration purposes only, and will vary from the homes as built and are subject to change without notice. Homes in each neighborhood may be owned and sold by a separate limited liability company (LLC) or other corporate entity.