

# 4009 FALCON DRIVE

Farmersville, TX 75442

RootTheme

CALL TODAY

469-224-1552

Move-in Ready



## \$319,990

### LOCATION

3700 Richland Drive, Farmersville TX  
Lakehaven

### PLAN

Hayden

### ELEVATION:

Elevation B

Step into the Hayden, where you'll find four spacious bedrooms and three full bathrooms designed for maximum comfort and flexibility. An open-concept layout offers plenty of room to entertain, while the first-floor primary suite serves as a private getaway. With ample space, a large kitchen island, and additional storage, this plan is perfect for people who love to host.

[greenbrickHomes.com](https://www.greenbrickHomes.com)

Pricing, features and availability are subject to change without notice. Root Theme makes reasonable efforts to provide accurate information, however, no warranties or representations are made as to its accuracy and Root Theme assumes no liability or responsibility for any errors in pricing or content. All pricing information, including promotions and incentives, must be verified by an authorized representative for the appropriate community and home. Photography, floor plans, elevations, renderings, virtual tours, maps, square footage and dimensions are approximate and for illustration purposes only, and will vary from the homes as built and are subject to change without notice. Homes in each neighborhood may be owned and sold by a separate limited liability company (LLC) or other corporate entity.



# 4009 FALCON DRIVE

Farmersville, TX 75442

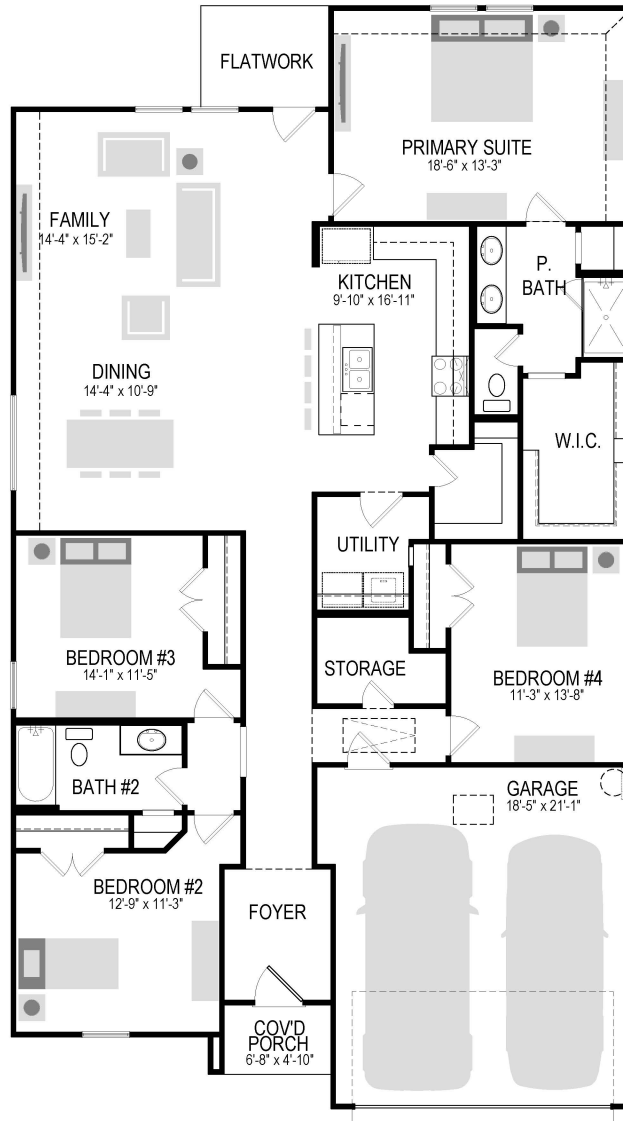
RootTheme

CALL TODAY

469-224-1552

## First Floor

1745 Hayden - FLOOR PLAN



[greenbrickHomes.com](http://greenbrickHomes.com)

Pricing, features and availability are subject to change without notice. Root Theme makes reasonable efforts to provide accurate information, however, no warranties or representations are made as to its accuracy and Root Theme assumes no liability or responsibility for any errors in pricing or content. All pricing information, including promotions and incentives, must be verified by an authorized representative for the appropriate community and home. Photography, floor plans, elevations, renderings, virtual tours, maps, square footage and dimensions are approximate and for illustration purposes only, and will vary from the homes as built and are subject to change without notice. Homes in each neighborhood may be owned and sold by a separate limited liability company (LLC) or other corporate entity.

# 4009 FALCON DRIVE

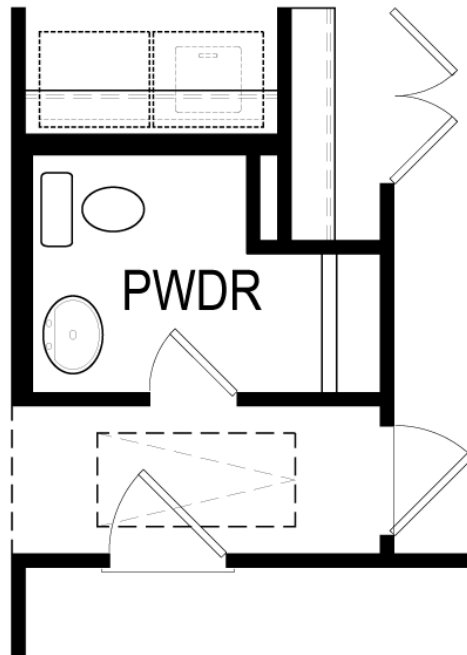
Farmersville, TX 75442

RootTheme

CALL TODAY

469-224-1552

## Option



### BATH #3

[greenbrickHomes.com](http://greenbrickHomes.com)

Pricing, features and availability are subject to change without notice. Root Theme makes reasonable efforts to provide accurate information, however, no warranties or representations are made as to its accuracy and Root Theme assumes no liability or responsibility for any errors in pricing or content. All pricing information, including promotions and incentives, must be verified by an authorized representative for the appropriate community and home. Photography, floor plans, elevations, renderings, virtual tours, maps, square footage and dimensions are approximate and for illustration purposes only, and will vary from the homes as built and are subject to change without notice. Homes in each neighborhood may be owned and sold by a separate limited liability company (LLC) or other corporate entity.

# 4009 FALCON DRIVE

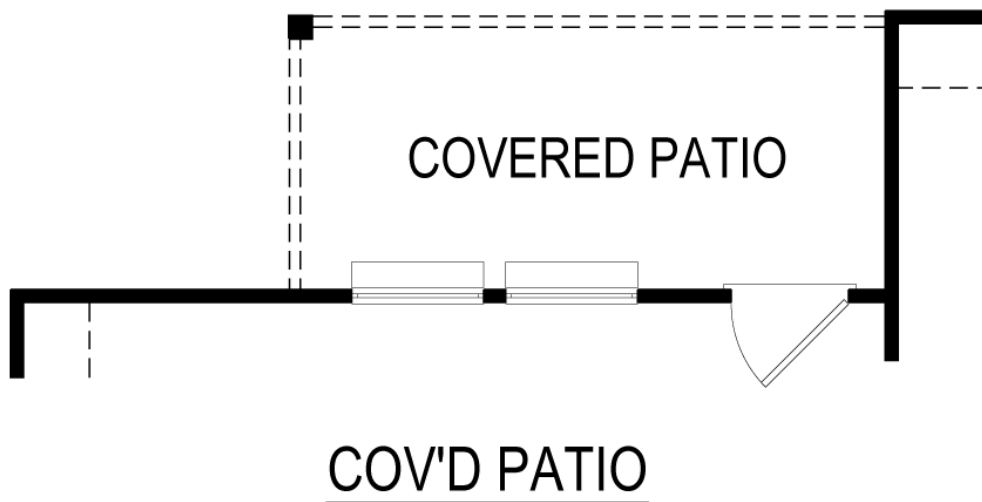
Farmersville, TX 75442

RootTheme

CALL TODAY

469-224-1552

## Option



[greenbrickHomes.com](http://greenbrickHomes.com)

Pricing, features and availability are subject to change without notice. Root Theme makes reasonable efforts to provide accurate information, however, no warranties or representations are made as to its accuracy and Root Theme assumes no liability or responsibility for any errors in pricing or content. All pricing information, including promotions and incentives, must be verified by an authorized representative for the appropriate community and home. Photography, floor plans, elevations, renderings, virtual tours, maps, square footage and dimensions are approximate and for illustration purposes only, and will vary from the homes as built and are subject to change without notice. Homes in each neighborhood may be owned and sold by a separate limited liability company (LLC) or other corporate entity.