

# 4000 FALCON DRIVE

Farmersville, TX 75442

RootTheme

CALL TODAY

469-224-1552

Under Construction



## \$289,990

### LOCATION

3700 Richland Drive, Farmersville TX  
Lakehaven

### PLAN

Harper

### ELEVATION:

Elevation A

The Harper is designed for those who need extra space and versatility. This four bedroom, two bathroom home features an expansive living area, flowing seamlessly into a modern kitchen with a large island - perfect for entertaining. The primary suite is a peaceful retreat with an en-suite bath, while three additional bedrooms offer flexibility for guests, a home office, or a creative space.

[greenbrickHomes.com](https://www.greenbrickHomes.com)

Pricing, features and availability are subject to change without notice. Root Theme makes reasonable efforts to provide accurate information, however, no warranties or representations are made as to its accuracy and Root Theme assumes no liability or responsibility for any errors in pricing or content. All pricing information, including promotions and incentives, must be verified by an authorized representative for the appropriate community and home. Photography, floor plans, elevations, renderings, virtual tours, maps, square footage and dimensions are approximate and for illustration purposes only, and will vary from the homes as built and are subject to change without notice. Homes in each neighborhood may be owned and sold by a separate limited liability company (LLC) or other corporate entity.



# 4000 FALCON DRIVE

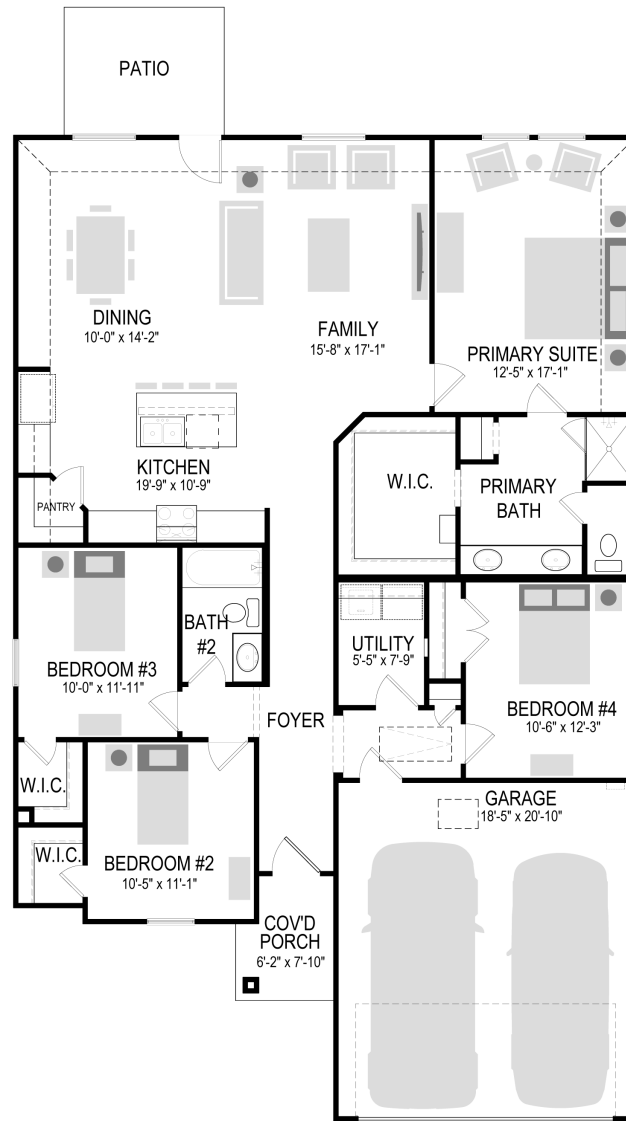
Farmersville, TX 75442

RootTheme

CALL TODAY

469-224-1552

## First Floor



[greenbrickHomes.com](https://www.greenbrickHomes.com)

Pricing, features and availability are subject to change without notice. Root Theme makes reasonable efforts to provide accurate information, however, no warranties or representations are made as to its accuracy and Root Theme assumes no liability or responsibility for any errors in pricing or content. All pricing information, including promotions and incentives, must be verified by an authorized representative for the appropriate community and home. Photography, floor plans, elevations, renderings, virtual tours, maps, square footage and dimensions are approximate and for illustration purposes only, and will vary from the homes as built and are subject to change without notice. Homes in each neighborhood may be owned and sold by a separate limited liability company (LLC) or other corporate entity.

# 4000 FALCON DRIVE

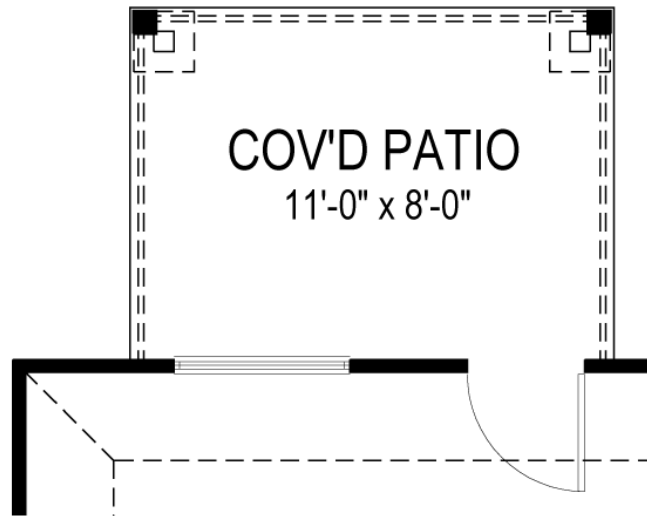
Farmersville, TX 75442

RootTheme

CALL TODAY

469-224-1552

## Option



## COV'D PATIO

[greenbrickHomes.com](https://www.greenbrickHomes.com)

Pricing, features and availability are subject to change without notice. Root Theme makes reasonable efforts to provide accurate information, however, no warranties or representations are made as to its accuracy and Root Theme assumes no liability or responsibility for any errors in pricing or content. All pricing information, including promotions and incentives, must be verified by an authorized representative for the appropriate community and home. Photography, floor plans, elevations, renderings, virtual tours, maps, square footage and dimensions are approximate and for illustration purposes only, and will vary from the homes as built and are subject to change without notice. Homes in each neighborhood may be owned and sold by a separate limited liability company (LLC) or other corporate entity.