

222 SPIRIT STREET

Elgin, TX 78621

RootTheme

CALL TODAY

512-640-2346



\$298,900

LOCATION

216 Tolo Drive, Elgin TX

Trinity Ranch

PLAN

Redbud | Trinity Ranch

Welcome to the Redbud, where sophisticated design effortlessly merges with practicality. This floor plan is meticulously crafted to provide a perfect balance of modern elegance and everyday convenience, ideal for dynamic living as well as serene relaxation. Upon entering the Redbud, you'll be welcomed by a spacious foyer that leads into a large, open concept living area. Here, the kitchen, dining, and living spaces blend seamlessly, creating a bright and airy environment perfect for both casual moments and lively gatherings. The kitchen is designed with a generous island, sleek countertops, and appliances, making it both functional and stylish.

[greenbrickHomes.com](https://www.greenbrickHomes.com)

Pricing, features and availability are subject to change without notice. Root Theme makes reasonable efforts to provide accurate information, however, no warranties or representations are made as to its accuracy and Root Theme assumes no liability or responsibility for any errors in pricing or content. All pricing information, including promotions and incentives, must be verified by an authorized representative for the appropriate community and home. Photography, floor plans, elevations, renderings, virtual tours, maps, square footage and dimensions are approximate and for illustration purposes only, and will vary from the homes as built and are subject to change without notice. Homes in each neighborhood may be owned and sold by a separate limited liability company (LLC) or other corporate entity.

222 SPIRIT STREET

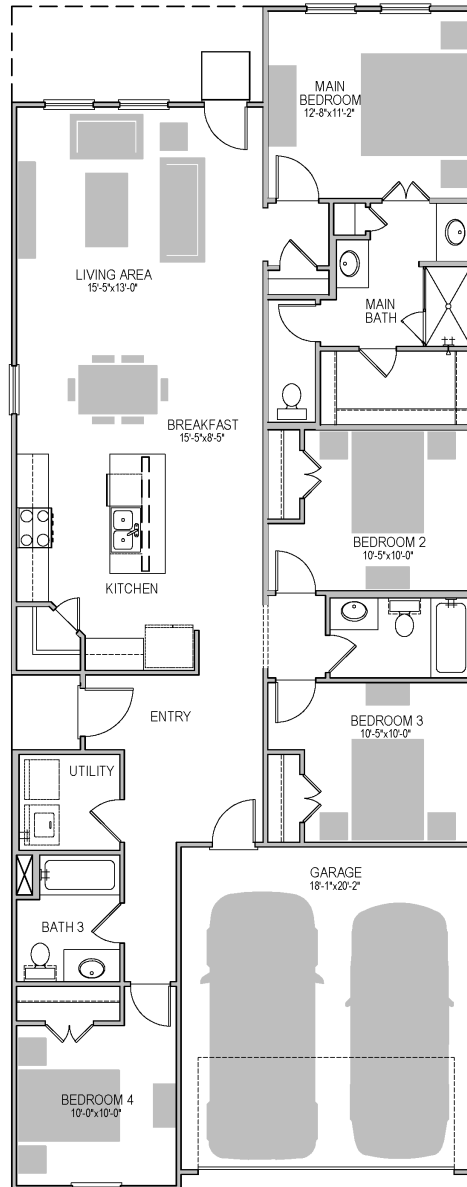
Elgin, TX 78621

RootTheme

CALL TODAY

512-640-2346

3046 REDBUD - 1st FLOOR PLAN



greenbrickHomes.com

Pricing, features and availability are subject to change without notice. Root Theme makes reasonable efforts to provide accurate information, however, no warranties or representations are made as to its accuracy and Root Theme assumes no liability or responsibility for any errors in pricing or content. All pricing information, including promotions and incentives, must be verified by an authorized representative for the appropriate community and home. Photography, floor plans, elevations, renderings, virtual tours, maps, square footage and dimensions are approximate and for illustration purposes only, and will vary from the homes as built and are subject to change without notice. Homes in each neighborhood may be owned and sold by a separate limited liability company (LLC) or other corporate entity.